

# Bishop's Cleeve Parish Council

## Budget Update

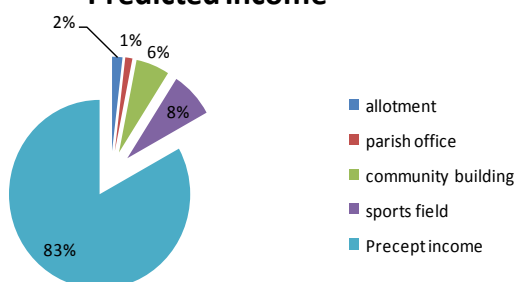
### April 2011



#### **Parish Precept 2011/12**

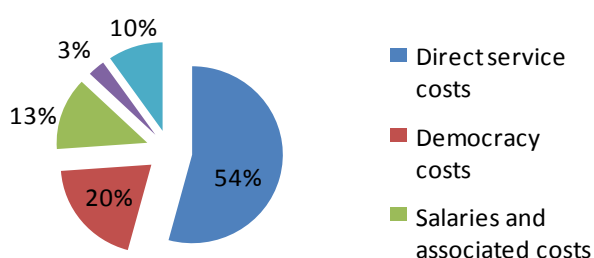
The Parish Council precept for 2011/12 will be £235,924. This represents an average of £57.16 per annum for a Band D Council Tax Payer, which represents an increase of 98p per annum. 83% of the income for the Parish comes from the precept. The other income comes from facilities such as the sports field, the parish office meeting rooms, the allotments and community building.

**Predicted Income**



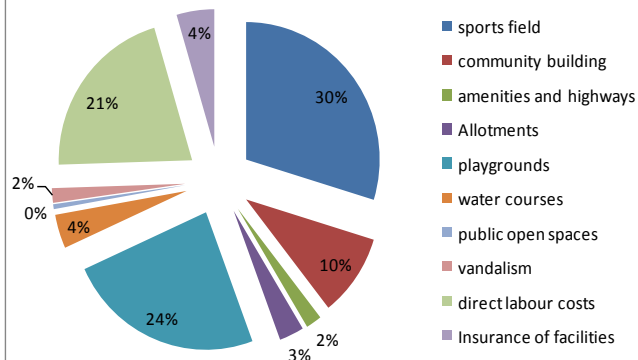
The majority of the money raised from the precept funds the day to day costs of providing local services and amenities. The main areas of expenditure are indicated below

**Predicted Expenditure**



The allotments and community building are self-financing. The cost of providing caretaking staff for the sports field, community building, parish office meeting room, the War Memorial garden, cemetery, the allotments, parish garden and play areas amount to 21% of the direct service costs. Other costs for the facilities include grass cutting, utilities, annual services, vandalism and repairs and replacements of equipment.

**Direct Service Costs**



The next largest area of expenditure is Democracy costs. This includes items such as grants and donations to local organisations as well as a grant of £15,000 to Cleeve Sports Centre and approx £26,000 to be ring fenced for youth provision, as the County Council has withdrawn all funding for the Youth club in Bishop's Cleeve from June 2011

### Community Facilities

The Parish Council remain opposed to any unsustainable large scale developments in the village. However to protect the interests of the residents the Parish Council has agreed a list of s106 community facilities that it would like new housing developers to provide .

#### **At Cheltenham Road sports field:-**

Additional changing rooms

Enhancements to the playing surfaces

Separate Toilet facilities

Tennis Courts

#### **At other sites in the Village:-**

Provision of Statutory Allotment Land

Youth Shelters and multi games areas

Community Building for groups such as the Scouts, Youth Activities and indoor sports such as Badminton.

An Additional building for the Air Training Corps.

Our website has a PDF booklet that can be downloaded for more detailed information. A copy can be obtained from the Parish Office. Your comments are very welcome.

There will be a **public display of proposed community facilities and potential employment areas by one of the proposed housing developers in the parish office during the week of 23rd of May.**

#### Contact details:

Bishop's Cleeve Parish Council

Church Road,

Bishop's Cleeve

Cheltenham

GL52 8LR

Telephone 01242 674440

Email [clerk@bishopscleevepc.org](mailto:clerk@bishopscleevepc.org)

Website [www.bishopscleevepc.org](http://www.bishopscleevepc.org)

### The Council has agreed a 4 year plan

#### **There are 9 aims**

- To have a Parish and Community Led plan
- To encourage and support the green agenda
- To encourage greater knowledge of and participation in the work of the Parish Council
- To develop sports and leisure facilities
- To secure Council owned Statutory Allotment Land
- To ensure that any future developments are sustainable
- To improve and ease movement in and around the village
- To facilitate independence for the elderly population of the village
- To improve and extend youth provision in the village.

The Parish Council would like local residents to be involved in developing this plan into a COMMUNITY LED PLAN see our website or visit the Parish Office

#### Your Parish Councillors are:

Fran Beattie 672089

Mark Cooper, 07751311157

Lesley Drake 679904

Geoffrey Jackson, 674146

Ann Lightfoot, 676682

Pete Lightfoot, 676682

Tony Mackinnon, 672534

Geoff Matthews 676746

John Peake, 677315

Kate Peake, 677315

Peter Richmond, 678271

Alan Shakespeare 663956

Philip Taylor, 677193